

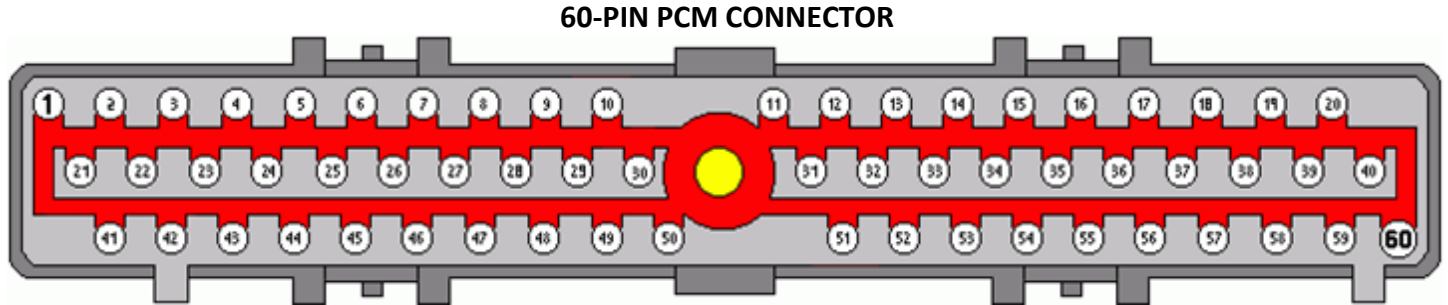
CORTEX EBC

1988-1995 Mustang GT 5.0L Specific Instructions

Rev 3.0.0

WIRING

The 1988-1995 Mustang PCM is inside the vehicle, behind the kick panel in the passenger side foot well near the door. The PCM has a single large 60-pin connector. Power, ground, RPM, vehicle speed, and throttle position signals can be accessed at the PCM connector.



The Cortex EBC wiring harness and Speed Sensor Adapter V2 can be connected to the 60-pin PCM connector as outlined in the following tables. RPM and vehicle speed signals are required for boost by gear applications. The Speed Sensor Adapter V2 can be connected to the same power and ground source as the Cortex EBC if desired.

CORTEX EBC TO PCM CONNECTIONS

CORTEX SIGNAL	CORTEX WIRE COLOR	PCM SIGNAL	PCM PIN	PCM WIRE COLOR
+12V Power	Red	Switched PCM Power	37	Red
Ground	Black (x2)	Connect to Chassis Near EBC	N/A	N/A
Engine Speed	Pink	Cam Position Signal (PIP)	56	Dark Blue Or Gray / Orange
General-Purpose	Orange	Throttle Position	47	Dark Green / Light Green Or Gray / White

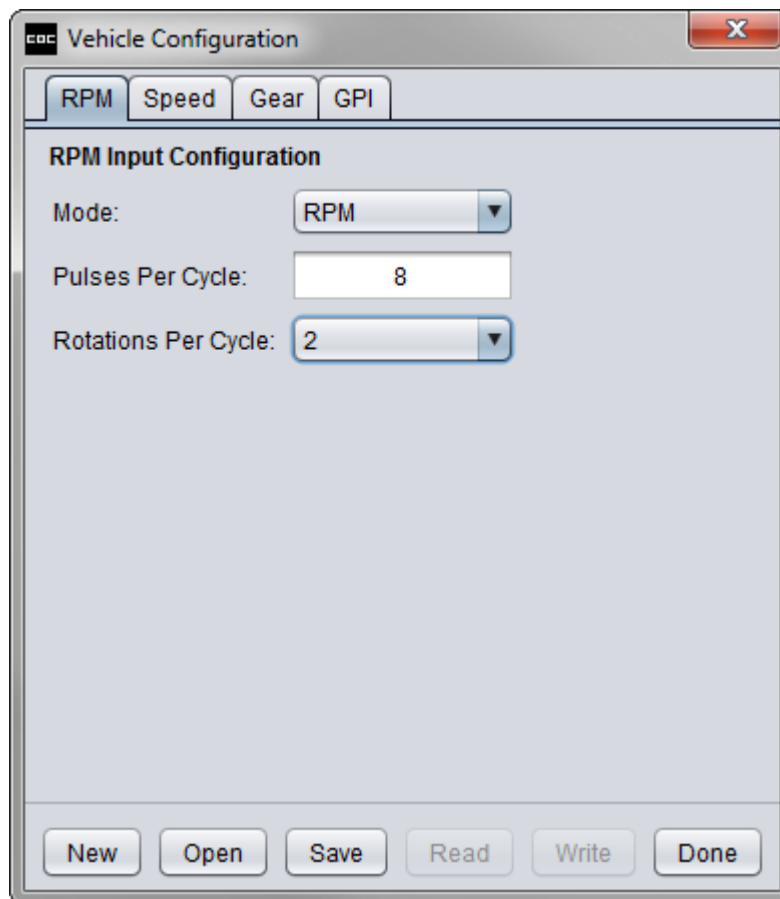
SPEED SENSOR ADAPTER V2 CONNECTIONS

SPEED SENSOR ADAPTER V2 SIGNAL	SPEED SENSOR ADAPTER V2 WIRE COLOR	PCM SIGNAL	PCM PIN	PCM WIRE COLOR
Sensor IN+	Green	VSS +	3	Dark Green / White Or Gray / Black
Sensor IN-	Blue	VSS -	6	Orange / Yellow Or Pink / Orange
-	-	CORTEX SIGNAL	-	CORTEX WIRE COLOR
Output	White	Vehicle Speed	-	Green

VEHICLE CONFIGURATION SETTINGS

RPM DETECTION:

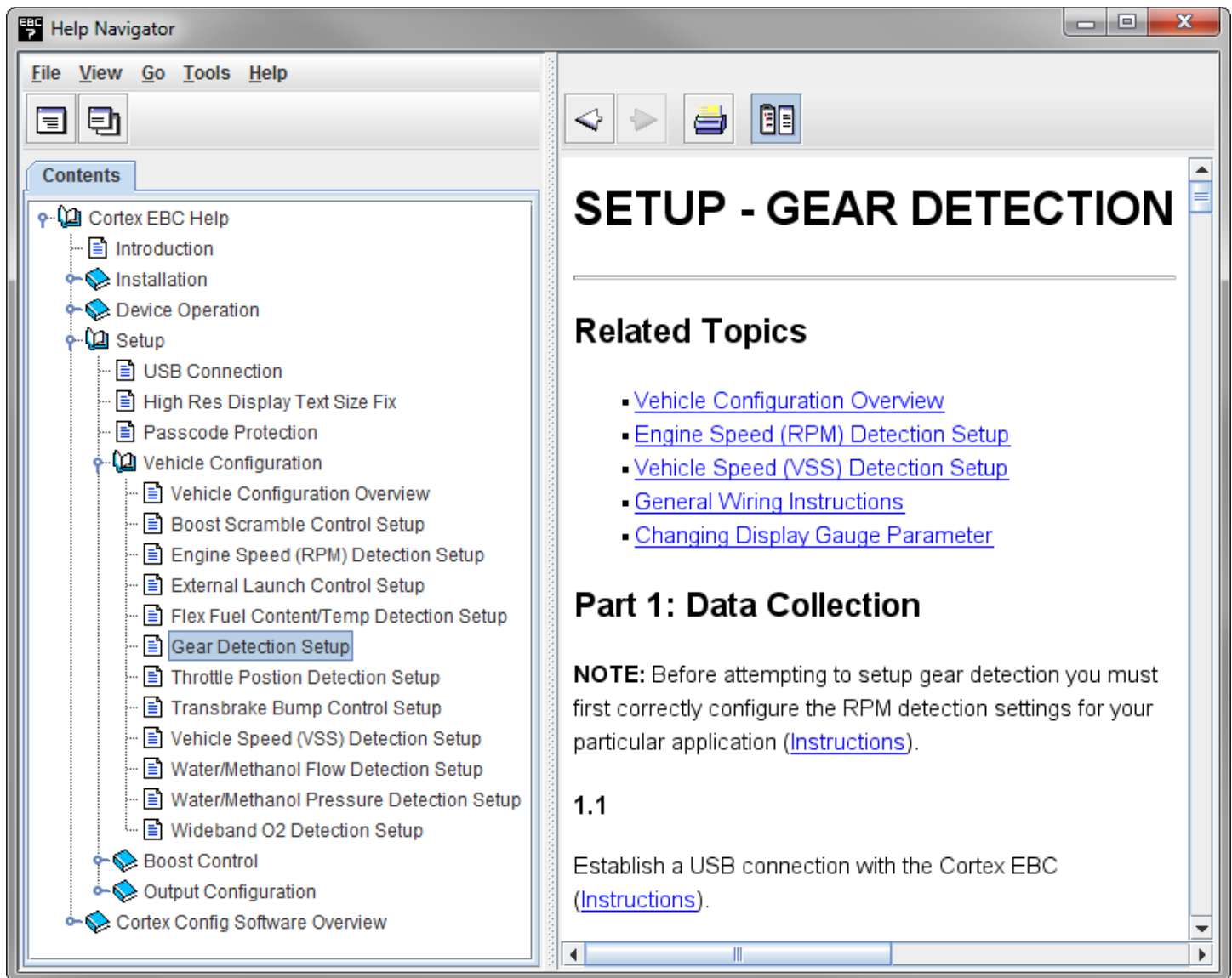
- Pulses Per Cycle: 8
- Rotations Per Cycle: 2



The image shows a software window titled "Vehicle Configuration" with a close button (X) in the top right corner. Inside the window, there are four tabs: "RPM", "Speed", "Gear", and "GPI". The "RPM" tab is currently selected. Below the tabs, the section is titled "RPM Input Configuration". It contains three settings: "Mode:" with a dropdown menu showing "RPM", "Pulses Per Cycle:" with a text input field containing the number "8", and "Rotations Per Cycle:" with a dropdown menu showing "2". At the bottom of the window, there is a row of six buttons: "New", "Open", "Save", "Read", "Write", and "Done".

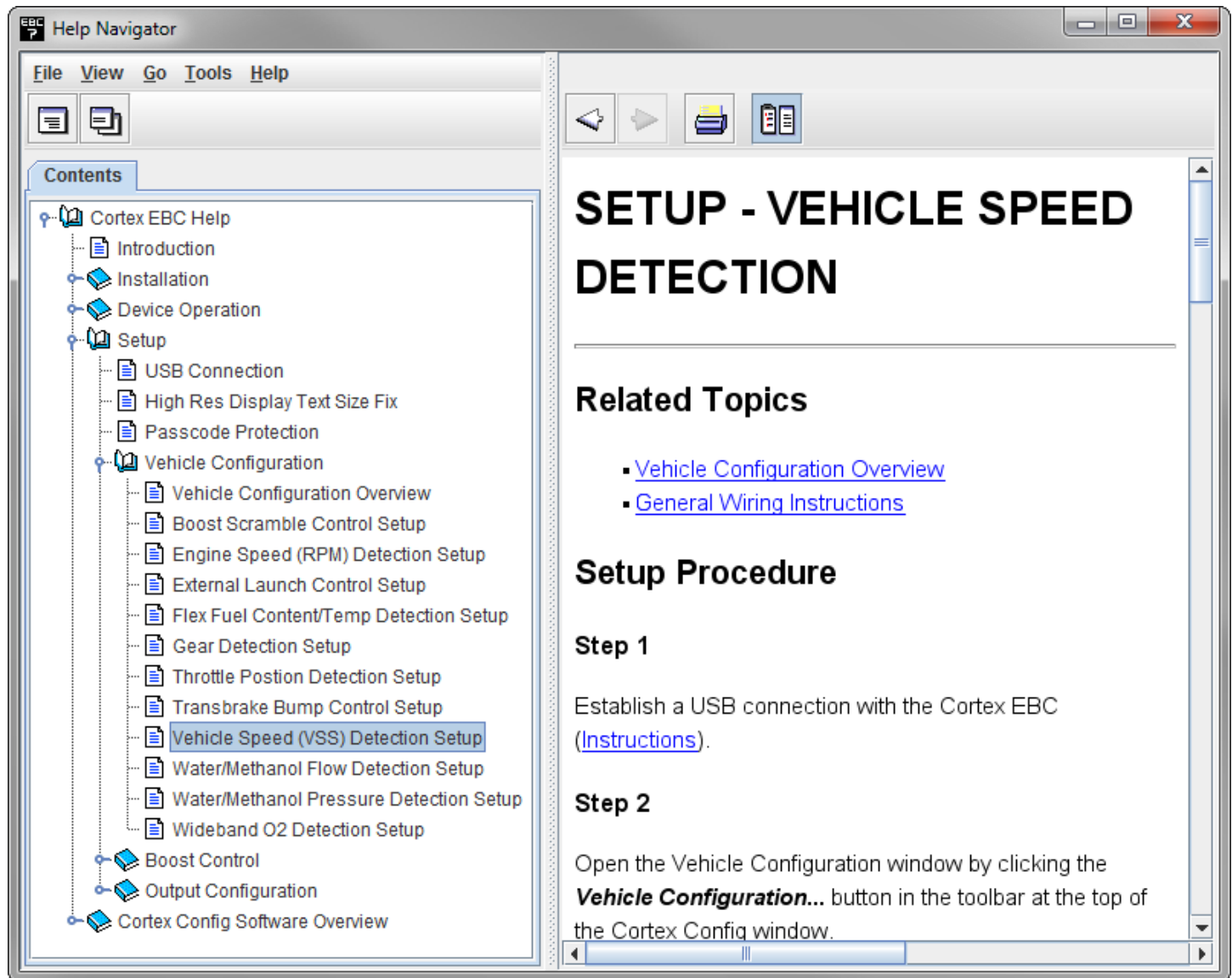
GEAR DETECTION:

- Follow the steps in the **Setup – Gear Detection** section of the Help utility to determine the correct EVS ratio settings for gear detection.



SPEED DETECTION:

- Follow the steps in the **Setup – Vehicle Speed Detection** section of the Help utility to determine the correct Pulses Per Mile setting.
- **NOTE:** Gear detection setup should be performed before calibrating the Pulses Per Mile setting.



THROTTLE POSITION DETECTION:

- Follow the steps in the **Setup – Throttle Position Detection** section of the Help utility to determine the correct Closed TPS Voltage and Open TPS Voltage settings.

