

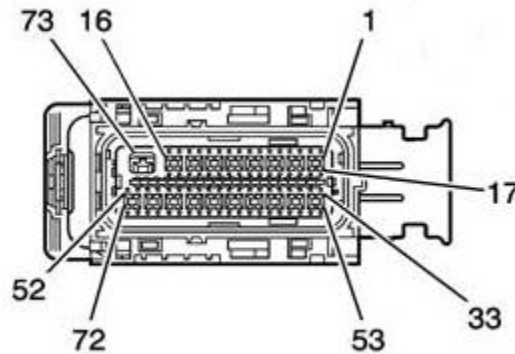
SIRHC LABS

GM E38 ECM SPEED AND RPM KIT INSTRUCTIONS

Revision 2.0.0

ECM WIRE POPULATION

Use a small flathead screwdriver to remove the cover(s) on the back of the X1 ECM connector to expose the wire terminals. Once the terminals are exposed unpopulated pins will be filled with colored plugs. These plugs must be removed with a screwdriver before a wire can be inserted.



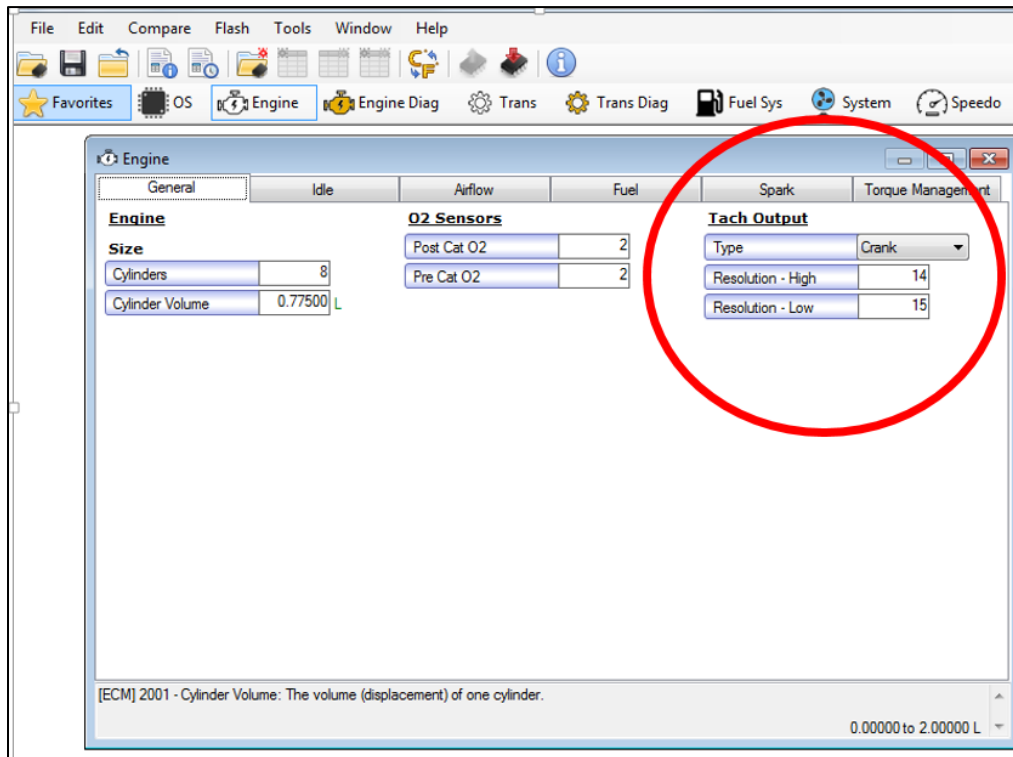
TACH OUTPUT: PIN 48, X1 CONNECTOR
VSS OUTPUT: PIN 57, X1 CONNECTOR

After removing a plug, correctly orient and insert one of the included wires/terminals into the empty slot until you hear a clicking sound. If you do not hear an audible click the connector is not properly seated. Remove the terminal and verify it is oriented correctly. Do not apply an excessive amount of pressure to try to force the terminal into its location. After pinning the ECM the included pull-up resistors must be wired as shown in the following diagram to obtain a signal.



HP TUNERS TACH ACTIVATION

Using HP Tuners, open the VCM Editor, go to Engine/General and locate the Tach Output. Change Type to **Crank**, Resolution-High to **14**, and Resolution-Low to **15**. Flash the ECM.



HP TUNERS VSS ACTIVATION

Using HP Tuners, open the VCM Editor, go to Speedo/Calibration and change the Speed Output Type to "VehSerial". Flash the ECM.

