

CORTEX CONFIG 6 – UPDATE INSTRUCTIONS

VERSION 6.3.7 | REVISION A

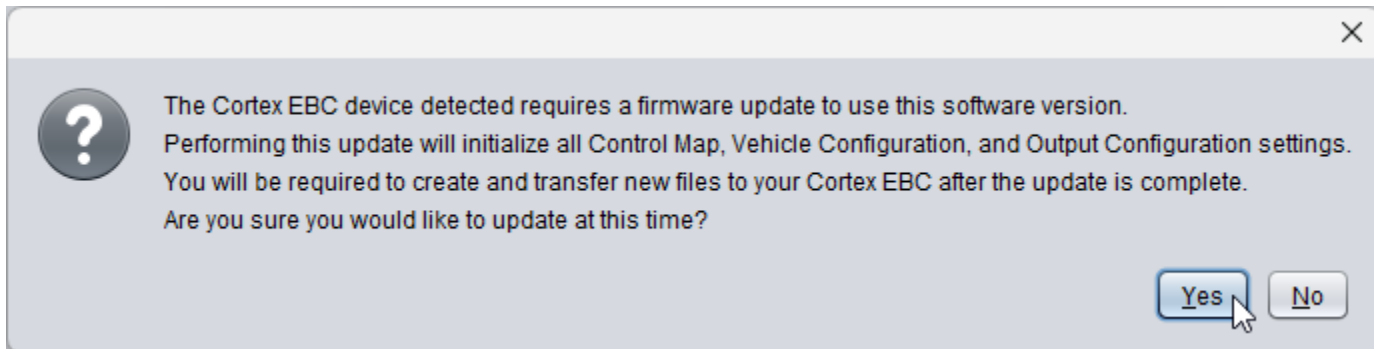
SOFTWARE INSTALLATION

In recent years, Microsoft has made it more challenging to distribute "trusted" software. When you try to run the Cortex Config 6 installer, the Windows SmartScreen filter will likely flag it as potentially dangerous. To proceed with the installation, click the "**More info**" button in the SmartScreen window. Then, click the "**Run anyway**" button that appears at the bottom of the window.

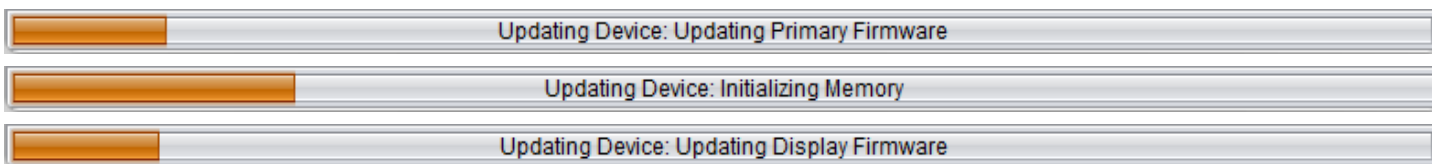


STEP 1 – UPDATE FIRMWARE

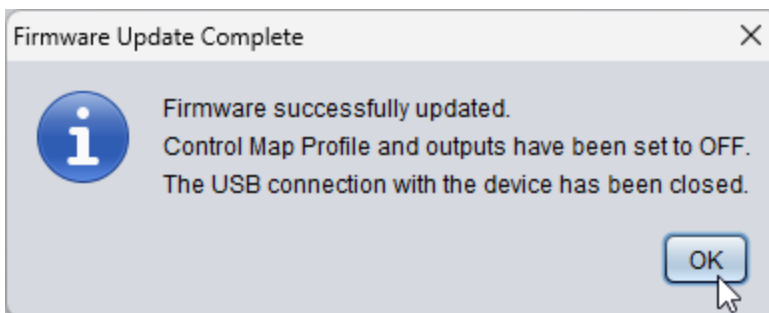
Connect the Cortex EBC USB cable to your laptop and launch the Cortex Config 6 software. When you try to establish a USB connection to the controller, a dialog box will appear, notifying you that a firmware update is required. Review the warning, then click "Yes" to proceed with the firmware update.



The firmware update will proceed in three steps: updating the primary firmware, erasing the memory, and updating the display firmware. The progress of each step will be displayed at the bottom of the software window. If the update does not complete all three steps successfully, please contact us for further assistance.



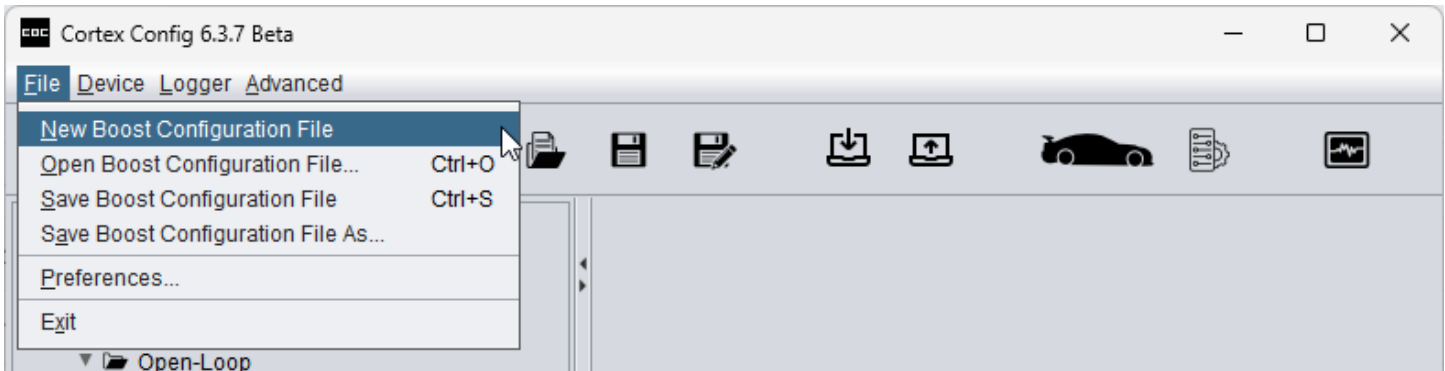
Once the process is complete, a dialog box will appear to notify you that the update was successful.



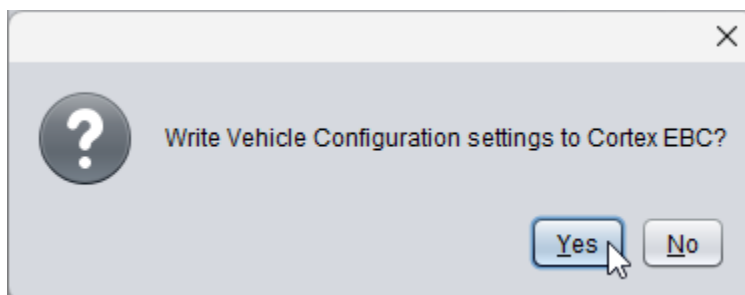
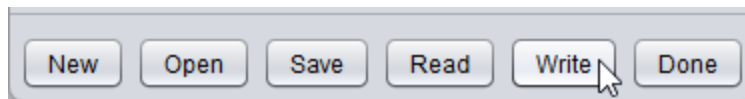
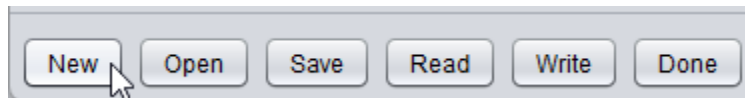
STEP 2 – CREATE NEW FILES

NOTE: This step is only required if you are updating from version 5.1.7 or earlier.

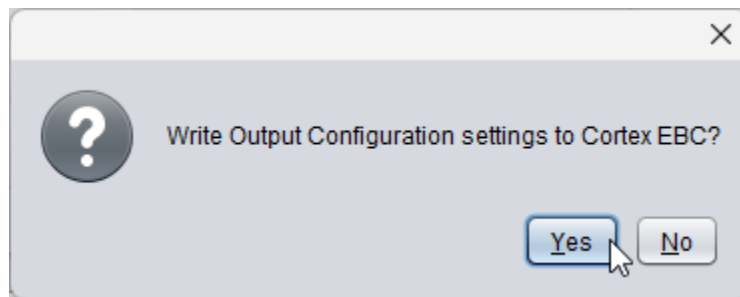
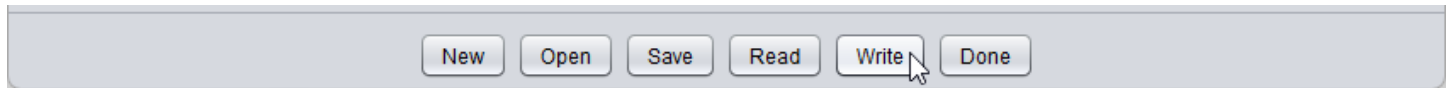
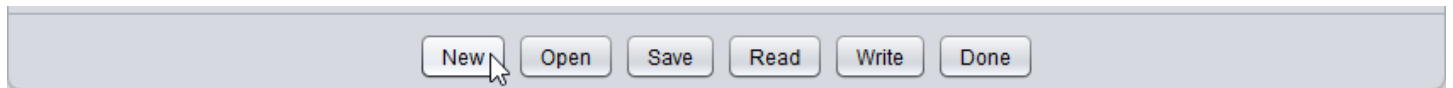
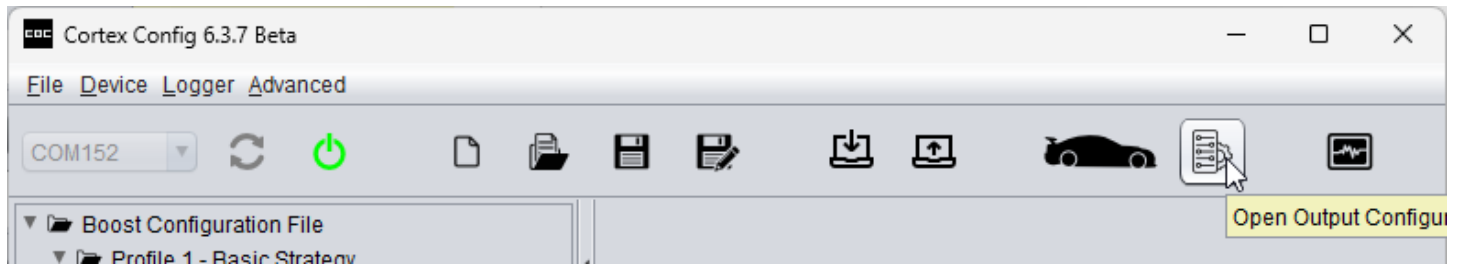
Establish a USB connection with the Cortex EBC. Create a new Boost Configuration File and transfer it to the device.



Open the Vehicle Configuration window, create a new file, and transfer it to the device.

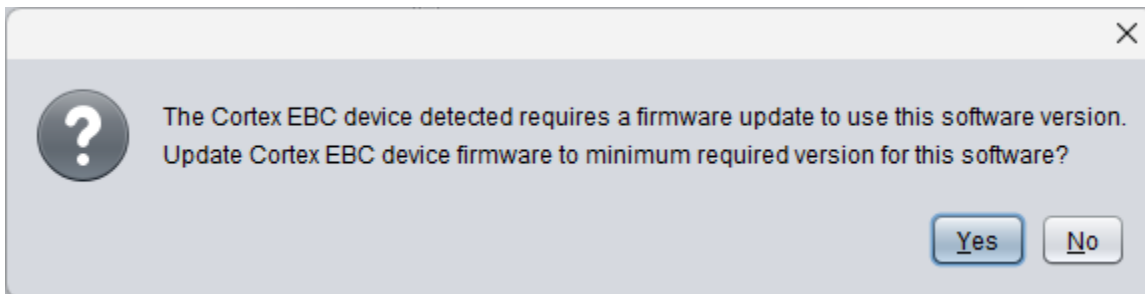


Open the Output Configuration window, create a new file, and transfer it to the device.

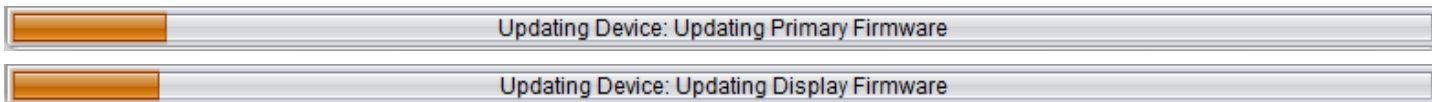


UPDATING FROM 6.3.3 OR NEWER

Connect the Cortex EBC USB cable to your laptop and launch the Cortex Config 6 software. When you try to establish a USB connection to the controller, a dialog box will appear, notifying you that a firmware update is required. Review the message, then click "Yes" to proceed with the firmware update.



The firmware update will proceed in two steps: updating the primary firmware and updating the display firmware. The progress of each step will be displayed at the bottom of the software window. If the update does not complete both steps successfully, please contact us for further assistance.



Once the process is complete, a dialog box will appear to notify you that the update was successful.

